



CONNECTICUT
COMMUNITY CARE™



SPRING 2026 NEWSLETTER

YOUR GIFT MATTERS

In the past few months alone, with guidance from our Care Management team, we've delivered meaningful items to hundreds of individuals we support—improving daily life and bringing moments of joy. From a \$32 back support pillow to a \$1,500 adjustable bed, these items make a difference. Here's a closer look at how people are benefitting from your giving.

- **JUNE, 78** – a transport chair that makes movement around her community possible
- **LAURA, 80** – now moving around more easily thanks to a Hoyer lift; her daughter had previously been using a manual lift, worsening her own back pain
- **MELINDA, 29** – warm clothing to replace worn items
- **SAUNDRA, 90** – a shower chair that improved her confidence
- **JOHN, 28** – a walking pad that made indoor exercise possible
- **JOSE, 70** – a supportive mattress that reduced the risk of further skin breakdown and enhanced his overall quality of life
- **KEVIN, 72** – an adjustable bed to help improve circulation and chronic back pain



Just the other day, Care Manager Jackie shared that her client was overwhelmed with joy after receiving a much-needed hearing aid attachment recommended by his audiologist.

“He was laughing and said, ‘Now I can hear you!’”

JULIE'S NOTE



Because of you, more people in our communities are able to remain where they most want to be — at home. Your

support helps families, caregivers, and community partners come together to provide the care and connection that make this possible.

At our core, we believe care is about people — their stories, their independence, and the life they want to continue living in the comfort of home. It is a privilege to be invited into someone's life during times of change. Each day, our team offers guidance, coordinates services and support, and listens with compassion to the individuals and families who rely on us.

Your generosity is what makes this work possible. Because of you, more individuals can remain supported and thriving at home. We are deeply grateful for your partnership and the trust you place in our mission.

Warmly, Julie



TEEING UP BIRDIES 2026!



Birdies for Charity is back—and CCC is in the game! Every donation helps people thrive at home... and every gift goes further with a 15% bonus thanks to Webster Bank and Aetna.

Donate today and help us hit a hole-in-one for people in our communities! Scan the QR code to learn more.

MEET BRIA WILSON: CCC's 5-Star Employee of the Year!

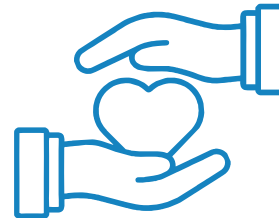


Bria works alongside her team in the field—participating in care conferences, transition day shopping, and post-transition visits. Through her hands-on approach, she fosters collaboration, encourages shared learning, and strengthens team connections.

Her attention to detail, strong organizational skills, and willingness to step in wherever needed make her a trusted mentor, an exceptional role model, and a valuable asset to CCC and the communities we serve.

MAKE A LASTING IMPACT – Now and Beyond Your Lifetime

Planned giving is a meaningful way to extend your compassion far into the future. By including CCC in your will, trust, or estate plans, you help ensure that people in our communities continue to receive the care, support, and guidance they need to thrive at home.



Talk with your financial advisor and connect with us to explore planned giving options that align with your goals.

VIEW OUR 2025-26 IMPACT REPORT

Scan the QR code to the left to take a peek at our 2025–26 Impact Report to see all the ways we made a difference together this past year!



Follow Us!      @CTCommunityCare